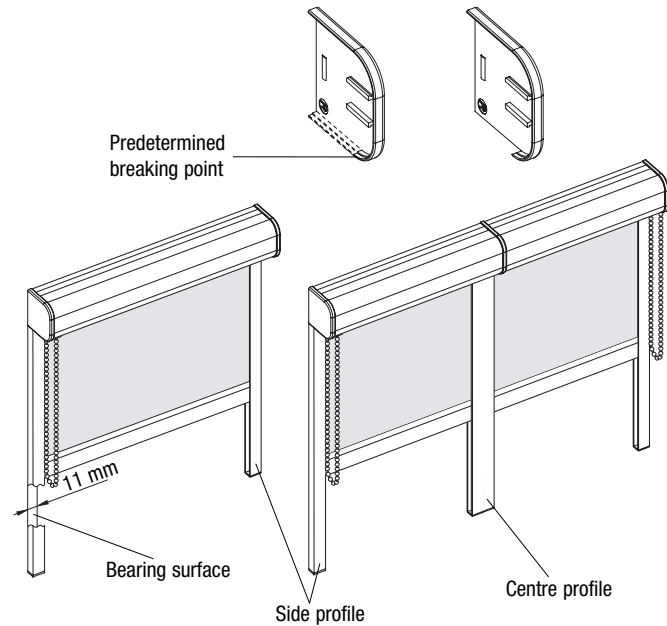


Mounting the guide profile

When assembling the guide profile, make sure that guide profiles run **parallel** to each other **right angles** to the roller blind.

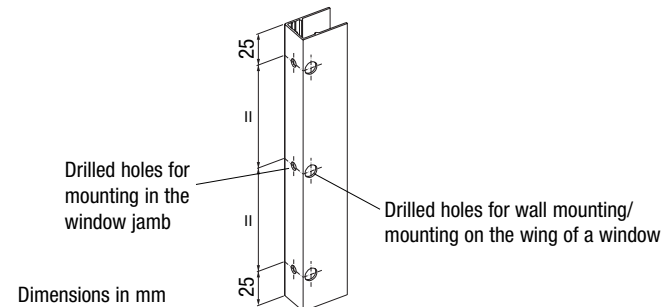
The bearing surface must have a width of min. 11 mm.

Note: After the roller blind cassette has been assembled, the remove of the lower edge of the end caps, as given up to the predetermined breaking point, takes place. Push the end caps onto the cover profile. Now assemble the profil guiding.



1. Determine the number of the fastening holes

△ Important! Hole distance 25 mm from the end of the profile, space the further holes evenly.

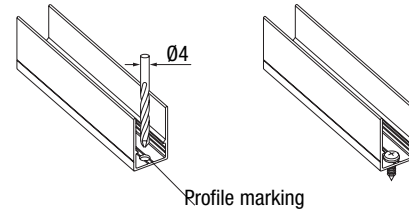


Mounting the guide profile

2a. Drilling the profiles for mounting in the window jamb

Place the $\varnothing 4$ mm twist drill on the profile marking and drill through.

Note: The window jamb must be at right angles and needs a depth of min 20 mm.

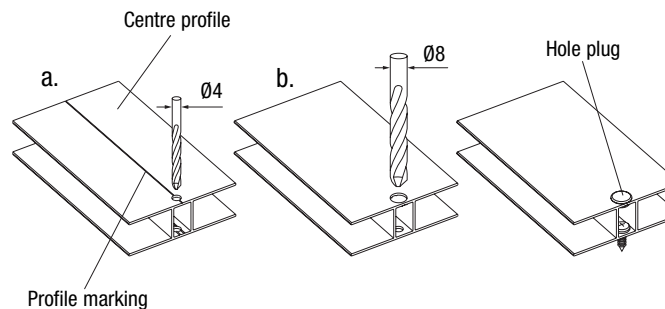
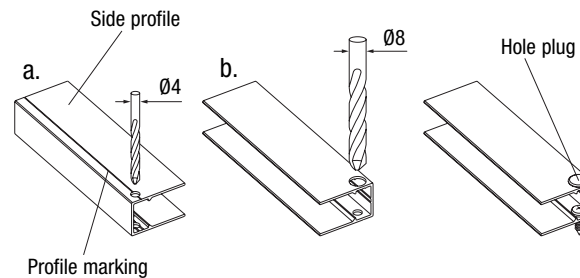


2b. Drilling the profiles for mounting on the wing of a window

a. Place the $\varnothing 4$ mm twist drill on the profile marking and drill through the whole profile.

b. Rotate the profile and enlarge bore the upper drilled hole by boring out with the $\varnothing 8$ mm twist drill.

Note: After installation, the profile marking is not visible and the $\varnothing 8$ mm hole is closed off with the hole plug.



Mounting the guide profile

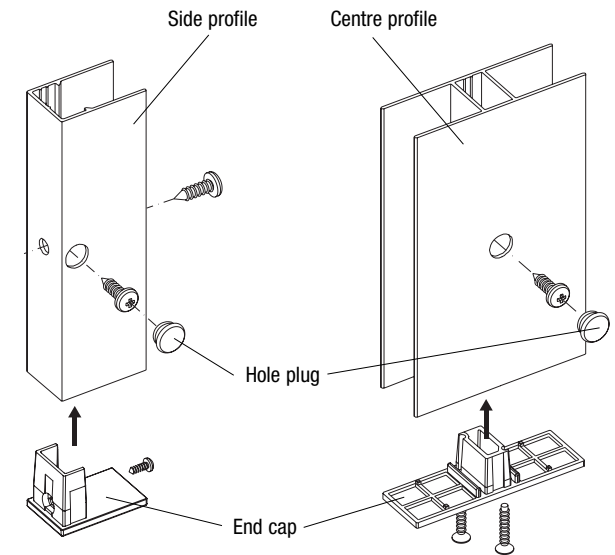
3a. Screw the profile on Type R115

a. Place the end caps on the profiles and screw tight.

b. Screw the guide profiles on.

Note: Make sure that profiles run **parallel** to each other and at **right angles** to the cassette profile of the blind. The outer side of the side profile runs flush with the outer side of the cassette profile of the blind.

c. Close off the $\varnothing 8$ mm holes with the hole plug.



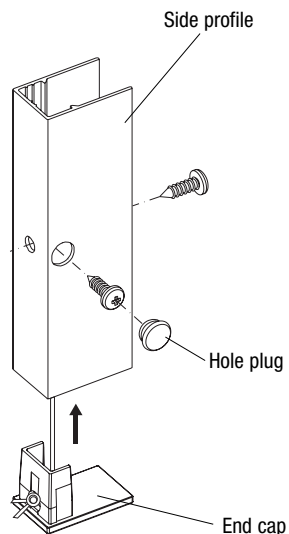
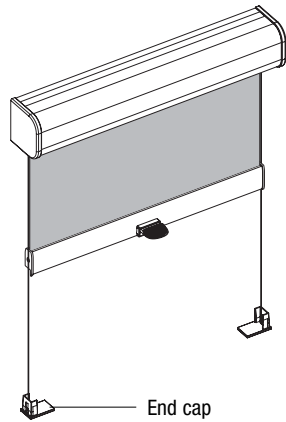
Mounting the guide profile

3b. Screw the profile on Type R155

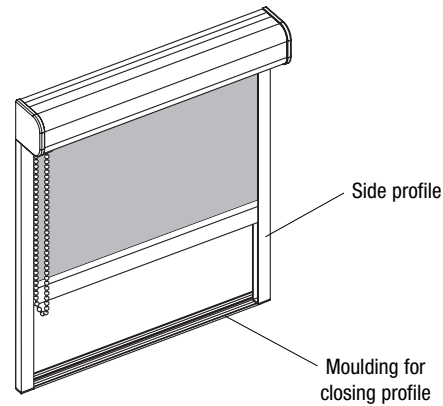
- Close off the $\varnothing 8$ mm holes with the hole plug.

Note: Make sure that profiles run **parallel** to each other and at **right angles** to the cassette profile of the blind.
The outer side of the side profile runs flush with the outer side of the cassette profile of the blind.

- Put the end caps through cord tension on the profile.

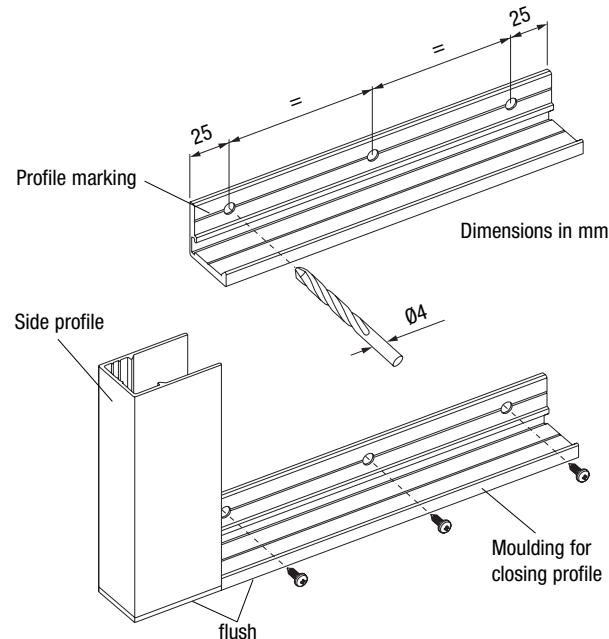


Moulding for closing profile



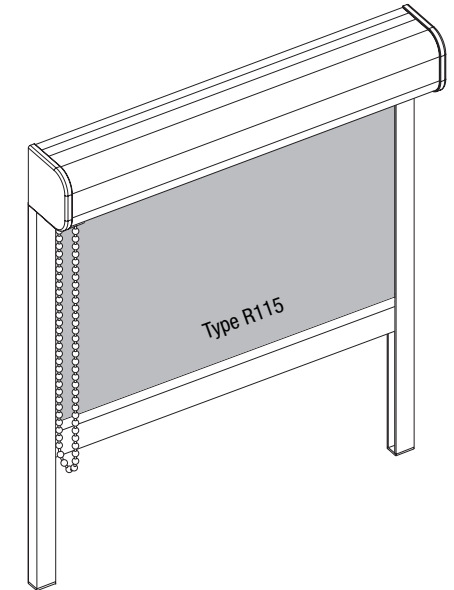
- Determine the number of the fastening holes.
△ Important! Hole distance 25 mm from the end of the profile, space the further holes evenly
- Place the $\varnothing 4$ mm twist drill on the profile marking and drill through.
- Screw on the moulding for the closing profile.

Note: The bottom of the moulding for the closing profile runs flush with the side profile (underside of the end cap).



Roller

Assembly guide profile for roller blinds Type R115 and Type R155



Dear Customer,

The guide profile is an option for your roller blind Type R115 and Type R155. The guide profile is installed after the roller blind Type R115/R155 has been assembled.

Please read the following instructions carefully before installing the blind.

The necessary installation material is supplied together with the blind.

Your
Roller
Manufacturer